

Shrimp Ramen



2116

Shrimp Feast Ramen

海老のごちそうラーメン

Loaded with shrimp wontons, shrimp balls, and lavishly topped with two whole shrimp. The rich broth is infused with deep shrimp flavor in every spoonful.

FOR TAKEAWAY

\$16.4

Visuals are for illustration purposes only. No service charge. Tax included.



ICHIKOKUDO
HOKKAIDO RAMEN • 北海道ラーメン



C14620

Quattro Cheese & Beef ≡ Miso Ramen ≡



2161

Quattro Cheese Beef Miso Ramen

クワトロチーズ味噌ラーメン

Miso ramen topped with Sukiyaki-style beef and a blend of four cheeses (Mozzarella, Cheddar, Red Cheddar, and Parmigiano). The addition of Milk gives the broth a rich and creamy flavor.



℞ \$17.4 ℒ \$19.4

150% of normal portion

Visuals are for illustration purposes only.
No service charge. Tax included.



ICHIKOKUDO
HOKKAIDO RAMEN • 北海道ラーメン



C14620

Quattro Cheese & Beef ≡ Miso Ramen ≡



2160

Quattro Cheese Beef
Spicy Miso Ramen

クワトロチーズ
スパイシー味噌ラーメン



R \$18.0 L \$20.0

150% of normal portion

Visuals are for illustration purposes only.
No service charge. Tax included.



ICHIKOKUDO
HOKKAIDO RAMEN • 北海道ラーメン



C14620



醬油 SHOYU

Step 1:
Choose soup type
• Original • Clear • Rich +\$2.0

Step 2:
Choose noodle type
• Thin • Thick

Step 3:
Choose salt level
• Regular salt • Less salt



2103 ICHI-Beef Ramen
R \$13.4 L \$15.4 [1.5x more noodles than regular size]

ICHI-Double Beef Ramen
R \$18.0 L \$20.0 [1.5x more noodles than regular size]
Sukiyaki-style beef slices, marinated egg, wood ear mushrooms, seasoned bamboo shoots and chopped green onion.



2101 ICHIKOKUDO Ramen Original
R \$10.4 L \$12.4 [1.5x more noodles than regular size]

Original authentic soy sauce ramen. Chicken chashu, marinated egg, wood ear mushrooms, seasoned bamboo shoots, and chopped green onion. *No choice of soup type*



2106 ICHI-Chicken Chashu Ramen
R \$13.4 L \$15.4 [1.5x more noodles than regular size]

Generous portion of chicken chashu, wood ear mushrooms, seasoned bamboo shoots and chopped green onion.



2110 ICHIKOKUDO Ramen Extra Rich
R \$12.4 L \$14.4 [1.5x more noodles than regular size]

Deep, flavorful and concentrated broth. Chicken chashu, diced chicken chashu, marinated egg, wood ear mushrooms, seasoned bamboo shoots and chopped green onion. *No choice of soup type*



2105 ICHI-Spicy Ramen
R \$11.4 L \$13.4 [1.5x more noodles than regular size]

Chicken chashu, marinated egg, spicy sauce, chili furikake, wood ear mushrooms, seasoned bamboo shoots and chopped green onion.



2111 ICHIKOKUDO Ramen Clear
R \$10.4 L \$12.4 [1.5x more noodles than regular size]

Signature flavor of ICHIKOKUDO with reduced oil and a clean yet layered taste. Chicken chashu, marinated egg, wood ear mushrooms, seasoned bamboo shoots and chopped green onion. *No choice of soup type*



2102 ICHI-Smoked Duck Ramen (3pcs)
R \$11.4 L \$13.4 [1.5x more noodles than regular size]

ICHI-Smoked Duck Ramen (6pcs)
R \$14.4 L \$16.4 [1.5x more noodles than regular size]

Smoked duck breast, marinated egg, wood ear mushrooms, seasoned bamboo shoots and chopped green onion.



2108 ICHI-Special Deluxe Ramen
R \$15.4 L \$17.4 [1.5x more noodles than regular size]

Chicken chashu, diced chicken chashu, marinated egg, wood ear mushrooms, seasoned bamboo shoots and chopped green onion.

塩 HOKKAI SHIO

Step 1:
Choose soup type
• Original • Clear • Rich +\$2.0

Step 2:
Choose noodle type
• Thin • Thick



2132 HOKKAI Clams Shio Butter Ramen
R \$13.4 L \$15.4 [1.5x more noodles than regular size]

Clams, butter, edamame, seasoned bamboo shoots and shredded leek.



2131 HOKKAI Shio Butter Ramen
R \$11.4 L \$13.4 [1.5x more noodles than regular size]

Chicken chashu, butter, edamame, seasoned bamboo shoots and shredded leek.



2138 HOKKAI Shio Beef Ramen
R \$14.4 L \$16.4 [1.5x more noodles than regular size]

HOKKAI Shio Double Beef Ramen
R \$19.0 L \$21.0 [1.5x more noodles than regular size]

Sukiyaki-style beef slices, butter, edamame, seasoned bamboo shoots and shredded leek.



2133 HOKKAI Spicy Shio Butter Ramen
R \$12.4 L \$14.4 [1.5x more noodles than regular size]

Chicken chashu, spicy sauce, chilli furikake, butter, edamame, seasoned bamboo shoots and shredded leek.



2137 HOKKAI Chashu Shio Butter Ramen
R \$14.4 L \$16.4 [1.5x more noodles than regular size]

A generous portion of chicken chashu, butter, edamame, seasoned bamboo shoots and shredded leek.



HOW TO PLACE A TAKEAWAY ORDER

- Walk in to the restaurant to place an order with a staff.
- Scan QR code to view the takeaway menu and ordering form online. Place your order online and self pick up at your selected date/time.

Note: Prices indicated are for takeaway and are inclusive of GST





味噌 *SAPPORO MISO*

Selection:
Choose noodle type
• Thin • Thick



2152 Sapporo Beef Miso Butter Corn Ramen
R \$15.4 L \$17.4 [1.5x more noodles than regular size]

Sapporo Double Beef Miso Butter Corn Ramen

R \$20.0 L \$22.0 [1.5x more noodles than regular size]

Sukiyaki-style beef slices, butter, corn, stir-fried vegetables and chopped green onion.

RECOMMENDED



2151 Sapporo Miso Butter Corn Ramen

R \$12.4 L \$14.4 [1.5x more noodles than regular size]

Chicken chashu, butter, corn, stir-fried vegetables and chopped green onion.



2154 Sapporo Spicy Miso Butter Corn Ramen

R \$13.4 L \$15.4 [1.5x more noodles than regular size]

Chicken chashu, spicy sauce, chili furikake, butter, corn, stir-fried vegetables and chopped green onion.

地獄 *HOKKAI JIGOKU*

Selection:
Choose noodle type
• Thin • Thick



2121 HOKKAI JIGOKU Ramen

R \$13.4 L \$15.4 [1.5x more noodles than regular size]

Chicken chashu, corn, wood ear mushrooms, stir-fried vegetables, chopped green onion and chilli furikake.



2122 HOKKAI JIGOKU Smoked Duck Ramen (3pcs)

R \$14.4 L \$16.4 [1.5x more noodles than regular size]

HOKKAI JIGOKU Smoked Duck Ramen (6pcs)

R \$16.4 L \$18.4 [1.5x more noodles than regular size]

Smoked duck breast, corn, wood ear mushrooms, stir-fried vegetables, chopped green onion and chilli furikake.



2124 HOKKAI JIGOKU Beef Ramen

R \$16.4 L \$18.4 [1.5x more noodles than regular size]

HOKKAI JIGOKU Double Beef Ramen

R \$21.0 L \$23.0 [1.5x more noodles than regular size]

Sukiyaki-style beef slices, corn, wood ear mushrooms, stir-fried vegetables, chopped green onion and chilli furikake.

PLANT BASED

Disclaimer: These products are 100% meat-free, but are cooked in the same equipment as other meat/seafood products.



2180 Plant Based Chicken Ramen
\$13.4

Plant based mince (contains egg), edamame, red cabbage, watercress, enoki mushroom, aosa seaweed and shredded leek.

Choose noodle type:

- Thin
- Thick



2180 Spicy Plant Based Chicken Ramen
\$14.4

Plant based mince (contains egg), chilli oil, red pepper powder, edamame, red cabbage, watercress, enoki mushroom, aosa seaweed and shredded leek.

Choose noodle type:

- Thin
- Thick



2405 Plant Based Grilled Chicken Gyoza
\$7.2 (5pcs) / \$13.8 (10pcs)

Plant based grilled chicken gyoza topped with chopped green onion



HOW TO PLACE A TAKEAWAY ORDER

- Walk in to the restaurant to place an order with a staff.
- Scan QR code to view the takeaway menu and ordering form online. Place your order online and self pick up at your selected date/time.

Note: Prices indicated are for takeaway and are inclusive of GST





KARAAGE DONBURI 唐揚げ丼

ICHIKOKUDO's pride - luxurious rice bowl with fries crispy chicken. Gently saovr the fresh ingredients in each freshly made-to-order dish. Toppings are drenched in an irresistible sauce, perfectly creating a sublime taste and texture.



2201 Japanese Garlic Chicken Karaage Don
R **\$13.2** Rice L **\$14.2**

Chicken karaage, Japanese-style soy sauce glaze, garlic mayonnaise sauce, tomato slices, lettuce, chopped green onion, sesame seeds and pickled vegetables.

RECOMMENDED



2207 Special Tartar Sauce Chicken Karaage Don
R **\$13.2** Rice L **\$14.2**

Chicken karaage, special nanban sauce, tartar sauce, tomato slices, lettuce, chopped green onion and pickled vegetables.



2213 Onsen Egg Japanese Garlic Chicken Karaage Don
R **\$15.2** Rice L **\$16.2**

Chicken karaage, onsen egg, Japanese-style soy sauce glaze, garlic mayonnaise sauce, tomato slices, lettuce, chopped green onion, sesame seeds and pickled vegetables.

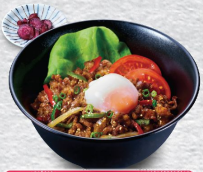


2215 Onsen Egg Special Tartar Sauce Chicken Karaage Don
R **\$15.2** Rice L **\$16.2**

Chicken karaage, onsen egg, special nanban sauce, tartar sauce, tomato slices, lettuce, chopped green onion and pickled vegetables.

DONBURI その他丼

Grilled meat and seafood resting on a special bed of Japanese white rice with a special blend of sweet sauce. Using the freshest ingredients in-store daily, dig into an ICHIKOKUDO-style rice bowl.



2204 Japanese Beef Yakiniku Don
R **\$14.2** Rice L **\$15.2**

Japanese-style grilled beef slices, onsen egg, tomato slices, lettuce, sesame, chopped green onion and pickled vegetables.

RECOMMENDED



2206 Teriyaki Unagi Don
R **\$17.2** Rice L **\$18.2**

Teriyaki unagi, shredded dried seaweed, shredded leek and pickled vegetables.



2210 Onsen Egg Teriyaki Unagi Don
R **\$19.2** Rice L **\$20.2**

Teriyaki unagi, onsen egg, shredded dried seaweed, shredded leek and pickled vegetables.

Note: Miso soup is not served for takeaway rice bowls.

TOPPINGS



ADD Marinated Egg
\$2.0



ADD Onsen Egg
\$2.0



ADD Chicken Chashu
\$3.2



ADD Sukiyaki-style Beef Slices
\$5.0

ADD Chili Furikake 
\$1.2

ADD Spicy Sauce 
\$1.0

ADD Seasoned Bamboo Shoots
\$1.2

ADD Wood Ear Mushrooms
\$1.2

ADD Smoked Duck Breast
\$5.0

ADD Butter
\$0.5

ADD Thin Noodles
\$2.9

ADD Thick Noodles
\$2.9



HOW TO PLACE A TAKEAWAY ORDER

- Walk in to the restaurant to place an order with a staff.
- Scan QR code to view the takeaway menu and ordering form online. Place your order online and self pick up at your selected date/time.

Note: Prices indicated are for takeaway and are inclusive of GST





BENTO

Enjoy ICHIKOKUDO's specialty in your bento box, full of the hearty taste of Hokkaido. Our famous chicken karaage, teriyaki salmon, and beef yakiniku in a bento carefully prepared just for you.



2552 Japanese Beef Yakiniku Bento
\$12.9

Japanese-style grilled beef slices, onsen egg, 2pcs grilled chicken gyoza, lettuce, tomato wedge, edamame, kimchi, rice with shredded nori.

RECOMMENDED



2551 Japanese Garlic Chicken Karaage Bento
\$10.9

Garlic chicken karaage, 2pcs grilled chicken gyoza, lettuce, tomato wedge, edamame, kimchi, rice with shredded nori.

SIDE MENU

2412 Edamame
\$3.2



2413 Butter Corn
\$3.2



2415 Butter Clams
\$7.8



2409 Ebi Fry
\$7.2 (Regular)
\$13.8 (Double)



2410 Calamari Fry
\$6.2 (Regular)
\$11.8 (Double)



2411 Mozzarella Cheese Sticks
\$6.2 (Regular)
\$11.8 (Double)



2401 ICHIKOKUDO's Grilled Chicken Gyoza
\$6.6 (5pcs)
\$12.2 (10pcs)



2403 Spicy Grilled Chicken Gyoza
\$7.2 (5pcs)
\$13.8 (10pcs)



2405 Plant Based Grilled Chicken Gyoza
\$7.2 (5pcs)
\$13.8 (10pcs)



2417 Japanese Garlic Chicken Karaage
\$7.8 (Regular)
\$14.8 (Double)



2418 Special Tartar Sauce Chicken Karaage
\$7.8 (Regular)
\$14.8 (Double)



DRINKS

2803 Coca-Cola Original Taste Less Sugar
\$2.9 **B** 5% sugar

2806 Fuze Tea Ice Lemon Tea
\$2.9 **B** 4% sugar

2807 Dasani Drinking Water
\$2.5 **A** 0% sugar

2804 Coca-Cola Zero Sugar
\$2.9 **B** 0% sugar

2805 Qoo White Grape
\$2.9 **B** 5% sugar



Nutri-Grade mark is based on default preparation (before addition of ice).



HOW TO PLACE A TAKEAWAY ORDER

- Walk in to the restaurant to place an order with a staff.
- Scan QR code to view the takeaway menu and ordering form online. Place your order online and self pick up at your selected date/time.

Note: Prices indicated are for takeaway and are inclusive of GST

